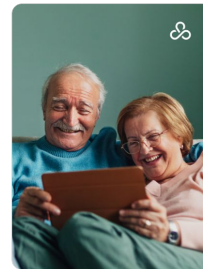
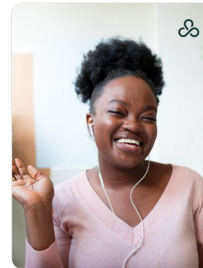
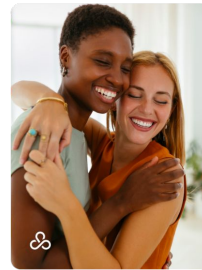
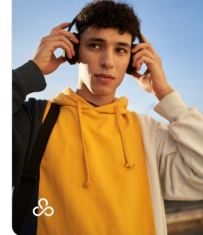
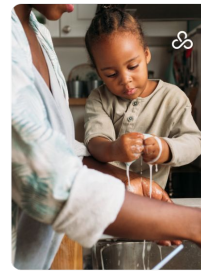




# Access to mental health experts who specialize in you.

Rula's network of 9,500+ mental health providers can support you and your family with virtual therapy, psychiatry, or a combination of both.



## A personalized approach to care, tailored around you.



### Affordable, accessible care

Rula partners with your insurance company to make care more affordable.



### Focused on quality

All providers undergo regular clinical reviews and have access to peer review and development workshops.



### Meet your match

Providers in Rula's network represent a wide range of specialties and backgrounds.

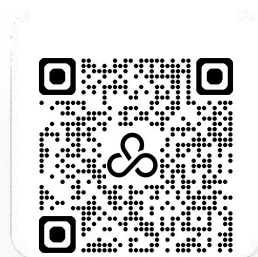


### Your search, made simpler

We'll help you find an in-network provider and schedule your first appointment in minutes.

### Ready to get started?

Scan to find your therapist who specializes in you



Get started today  
[rula.com/SISC](https://rula.com/SISC)

We can make real progress together

Have questions?  
Call (323) 676-7360